

DISTRIBUTION CENTRES ACROSS CANADA

• SALES • SERVICE • PARTS •
www.lemmer.com

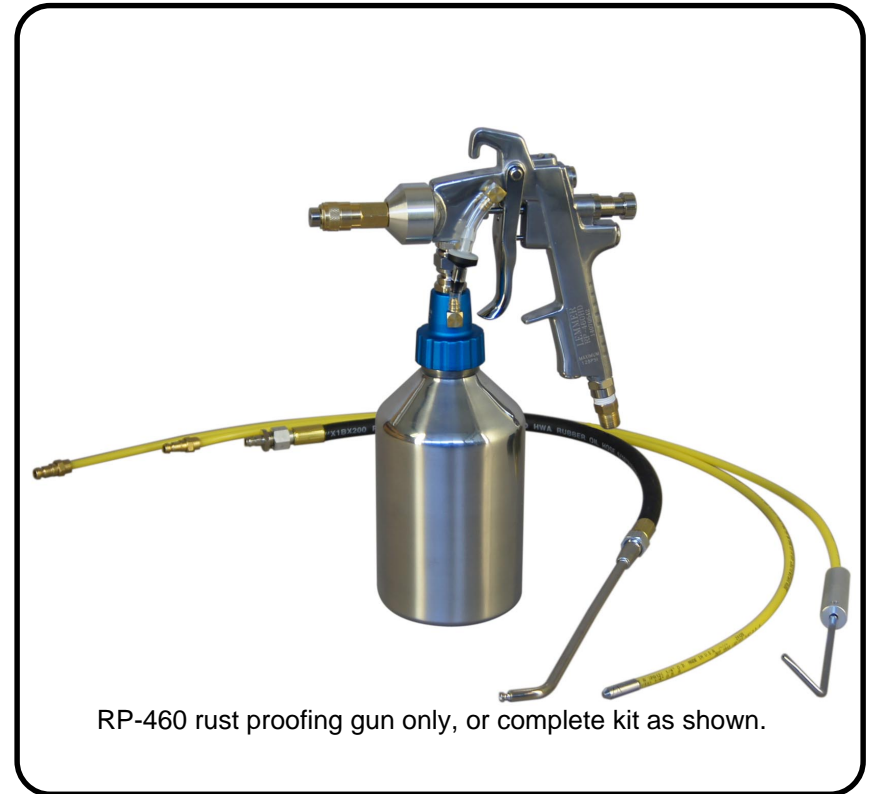
CALGARY Lemmer Spray Systems Ltd.
(head office) 4624 - 12th Street N.E. Calgary, AB, T2E 4R4
TEL: (403) 250-7735 **FAX: (403) 291-9095**

TORONTO Lemmer Spray Systems (Ont.) Ltd.
7585 Torbram Rd, #7&8, Mississauga, ON, L4T 1H2
TEL: (905) 673-1555 **FAX: (905) 673-3201**

MONTRÉAL Lemmer (Qué.) Inc.
2851 Bd le Corbusier, Chomedey, Laval, QC, H7L 4J5
TEL: (450) 681-8220 **FAX: (450) 681-4914**

Mar-20-19

RP-460 HD RUST PROOF GUN OWNER'S MANUAL



RP-460 rust proofing gun only, or complete kit as shown.

LEMMER PAINT SPRAYING EQUIPMENT LIMITED WARRANTY

LEMMER Spray Systems Ltd. extends to the original purchaser of its paint spray equipment a limited **one year warranty** from the date of purchase against **defects in material or workmanship** provided that the equipment is installed and operated in accordance with the recommendations and instructions written in the owners manual. LEMMER Spray Systems Ltd. will **repair or replace**, at its option, defective parts without charge if such parts are returned (still intact in the original equipment) with transportation charges **prepaid** to the nearest LEMMER Spray Systems Ltd. outlet. An original **proof of purchase** must be attached.

THIS WARRANTY DOES NOT COVER:

Normal wear and/or defects caused by or related to abrasion, corrosion, abuse, negligence, accident, faulty installation or tampering in a manner which impairs normal operation.

Transportation costs and other incidental, direct, special, or consequential damages or loss.

manual #L015-290

WARNING..Read all instructions carefully before assembling components and operating sprayer. Incorrect procedure could result in damage to the unit, severe personal injury and/or property damage. When spraying flammable materials the air compressor must be placed at least 20 feet from target in a well-ventilated area. Vapours can be ignited by static discharge or electrical sparks and result in severe personal injury. Do not use halogenated hydrocarbons (eg: 1,1,1, trichloroethane or methylene chloride) or caustic products to clean the aluminum container or gun body, as this may weaken them and/or cause a potentially explosive chemical reaction. Cleaning agents, coatings, paints, and adhesives may contain halogenated hydrocarbon solvents. Don't take chances, consult your material supplier to be sure.

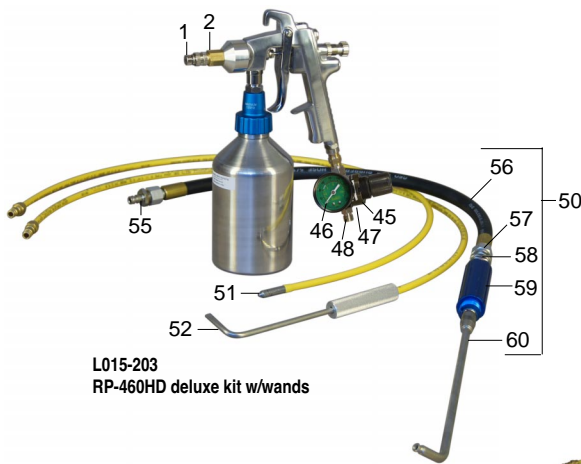
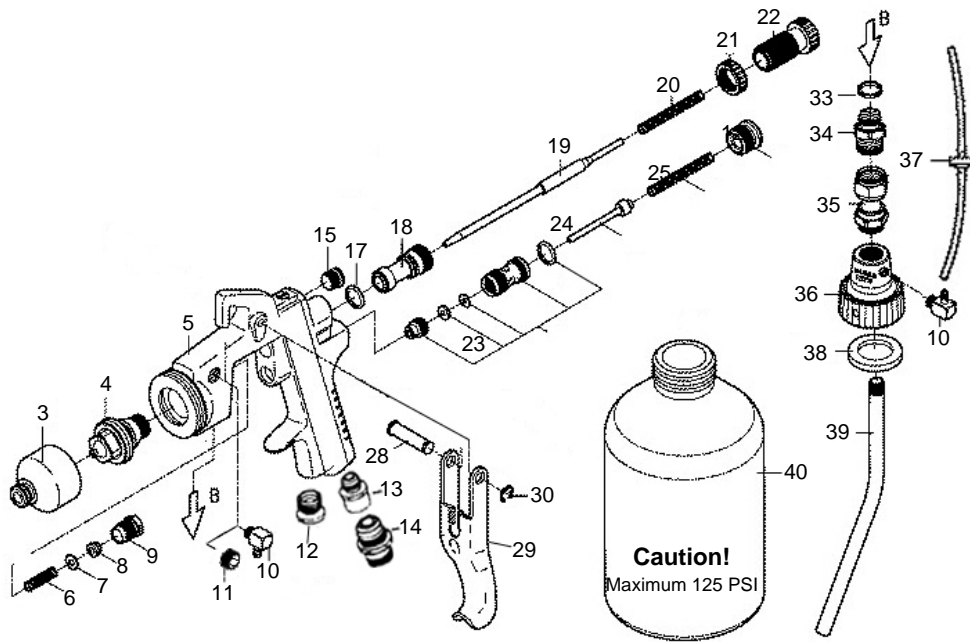
LEMMER

CALGARY

TORONTO

MONTRÉAL

PARTS DIAGRAM



L015-203
RP-460HD deluxe kit w/wands



L015-201
RP-460HD kit with wands

PARTS LIST

| Pos. | Part nos. | Description | Qty. | Pos. | Part nos. | Description | Qty. |
|------|-----------------|------------------------------------|------|-------------------------|-----------|-------------------------------------|------|
| | L015-201 | RP-460HD kit with wands | | 29 | L015-268 | Trigger | 1 |
| | L015-203 | RP-460HD deluxe kit w/wands | | 30 | L015-269 | C-clip | 1 |
| | L015-210 | RP-460HD pressure feed gun | | 33 | L015-271 | Seal | 1 |
| 1 | L015-142 | Round nozzle | 1 | 34 | L015-285 | Inlet fitting (valve vers) | 1 |
| 2 | L015-155 | Quick coupler | 1 | 35 | L015-286 | Inlet swivel adapter (valve vers) | 1 |
| 3 | L015-139 | Rust Proof adapter | 1 | 36 | L015-294 | Blue housing (valve vers) | 1 |
| 4 | L015-252 | Nozzle | 1 | 37 | L080-724 | Cup valve kit RP460-2014 | 1 |
| 5 | L015-254 | Gun body | 1 | 38 | L015-282 | Cup seal 38mmOD(125psi) | 1 |
| 6 | L015-288 | Packing spring | 1 | 39 | L015-287 | Tube, Stainless Steel | 1 |
| 7 | L015-289 | Packing washer | 1 | 40 | L015-283 | Container (125 psi) | 1 |
| 8 | L015-291 | Packing | 1 | | | | |
| 9 | L015-292 | Packing nut | 1 | | | | |
| 10 | L081-356 | Elbow, M8x0.75x1/16 barb | 2 | Accessories: | | | |
| 11 | L081-365 | Plug, M8x0.75 (#210 version) | 1 | 45 | L011-179 | Air regulator | 1 |
| 12 | L015-265 | Cap | 1 | 46 | L015-453 | Air gauge | 1 |
| 13 | L015-284 | Adapter, male to 1/4F | 1 | 47 | L036-070 | Plug 1/8" | 1 |
| 14 | L033-179 | Fitting (with Check Valve) | 1 | 48 | L035-501 | Connector 1/4"m | opt |
| 15 | L015-278 | Plug, RP-460 | 1 | 49 | L015-143 | HD flex wand | 1 |
| 17 | L015-256 | O-ring | 1 | 50 | L015-144 | HD flex wand - Deluxe | opt |
| 18 | L015-257 | Needle guide | 1 | 51 | L015-147 | Wand, 360° swirl | 1 |
| 19 | L015-258 | Needle | 1 | 52 | L015-148 | Wand, 90° hook | 1 |
| 20 | L015-259 | Needle spring | 1 | | L015-290 | Manual, RP-460 gun | 1 |
| 21 | L015-260 | Lock nut | 1 | Accessory parts: | | | |
| 22 | L015-261 | Needle adjuster | 1 | 55 | L015-109 | QC nipple only - 1/4m | |
| 23 | L015-262 | Air valve seat ass'y | 1 | 56 | L015-108 | Replacement 21" hose w/1/4Fends | |
| 24 | L015-263 | Air valve cone | 1 | | L015-189 | Replcmt 21" hose w/1/4Fends upgrade | |
| 25 | L015-264 | Spring | 1 | 57 | L015-191 | Handle swivel | |
| 28 | L015-267 | Trigger axle | 1 | 58 | L032-520 | Handle swivel seal | |
| | | | | 59 | L015-190 | Handle, RP blue | |
| | | | | 60 | L015-107 | Metal wand only - 1/4m | |

Oct14

OPERATING INSTRUCTIONS

INTRODUCTION:

Thank you for purchasing a Lemmer rust proofing spray gun. This pressure feed gun is for use with most conventional coatings.

BASIC OPERATION:

Caution! Maximum 125 PSI.

The trigger controls the fluid flow. Adjust the trigger spring tension with the back tension knob just strong enough to shut fluid flow off. The air supply to the gun should be regulated between 20 and 100 psi. The amount of fluid is varied mostly by fluid pressure (which is same as the set air pressure).

For application of thin product adjust your regulator between 20 and 40 PSI, for thick product use between 60 and 90 psi. For paint spraying with the standard air cap, lower pressures deliver rough splatter effects while higher pressures generally deliver finer material droplets and smoother finishes. Generally higher pressures are needed for applying heavier paints.

Note: When using the RP-460 with a remote pot, material pressure should be approximately equal to the air pressure being used. Low material pressure will result in low or no material feed from the gun.

Note: The RP-460 with container must be kept upright whenever it is filled with fluid. Failure to do so, especially under pressure, may result in fluid backing up into gun and damaging the mechanism.

Note: When pulling trigger there will be a small delay before spraying.

CLEANING:

- 1) Empty the cup and rinse thoroughly with the recommended thinner. When the cup is clean, add more thinner to the cup and spray until all of the thinner has been removed from the system and clean thinner is spraying from the nozzle. Be sure to spray through each nozzle and wand accessory used during the spray session.
- 2) Clean the nozzle area of the gun by removing the air cap and use a brush with thinners to clean.

AIR USE:

Depending on pressure, 2 to 8 cfm air is required. A standard two cylinder compressor which uses about 13 amps at 120 volts will operate this gun continuously.